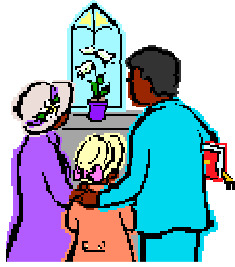


St. John Evangelical Lutheran Church

April 2009

REV. KEVIN K. ADER



715-423-7788

stjohnslutheranchurch@charterinternet.com

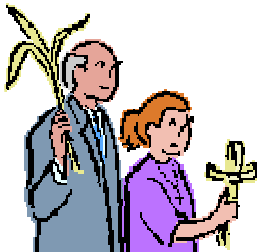
www.lutheransonline.com/lo/stjohnkellner

Mission Statement: We are called by God to be the light of the world. We are to go forth and show Jesus' love and forgiveness through loving care for all God's creation.

Lenten Service

Our last mid-week Lenten Service will be on April 1 at 10:30 AM and 6:30 PM. Pastor Grohs from Immanuel will have the theme Nails & Whip/Golgotha.

Palm Sunday



Our Palm Sunday Communion Service will be on April 5 at 9:30 AM.

Holy Week Schedule

Maundy Thursday Communion April 9 at 10:30 AM & 6:30 PM

Good Friday Service April 10 at 1:00 PM & 6:30 PM

Easter Vigil Communion April 11 at 6:30 PM

Easter Sunrise Communion April 12 at 6:30 AM

Easter Festival Communion April 12 at 9:30 AM

Soup & Sandwich

The Maundy Thursday 10:30 AM service on April 9 will be followed by a soup and sandwich luncheon sponsored by the Ladies Aid.

For a free will donation you can enjoy a hot bowl of homemade soup and a sandwich.



Please join us!

Easter Breakfast



The Evening Guild will be serving Easter breakfast between services on Easter Sunday, April 12 from 7:30 to 8:30 AM.

Tickets will be available at the door.

Adults \$4.00, Children \$2.50,

5 & under free.

All are welcome!

LWML Spring Rally



The Women's Ministry of St. Luke's Lutheran Church invites you to the LWML Spring Rally of Zone 17. The rally will be held on Sunday, April 19, beginning with registration and lunch at 12:00 noon. The registration fee of \$5.00 includes lunch.

Rally speakers will be Linda Pelot and Karen Benz. They will speak on the subject, "A Time to Learn: What is New for the Woman in the Pew." The Christian Life Topic lead by Chris Voelker and Erica Tyler will be on the subject of "Being a Mentor for the Lord."

Ingathering will be for the South Wood County Pantry.

Bring your Stamps for Missions and beverage tabs for the Ronald McDonald house.

Bus Trip to Bethesda and Taste of Home

Departure at 6:45 AM on April 30 from St. John Lutheran Church-Kellner

Travel to Bethesda Home-Watertown; arriving at 8:15 AM

Tour facility and Camp Matz and have catered lunch

Leave Watertown 1:00 PM

Travel to Taste of Home-Greendale; arriving at 2:00 PM

Tour Historical Greendale Village; explore area and shops at Taste of Home

Leave at 4:30 PM

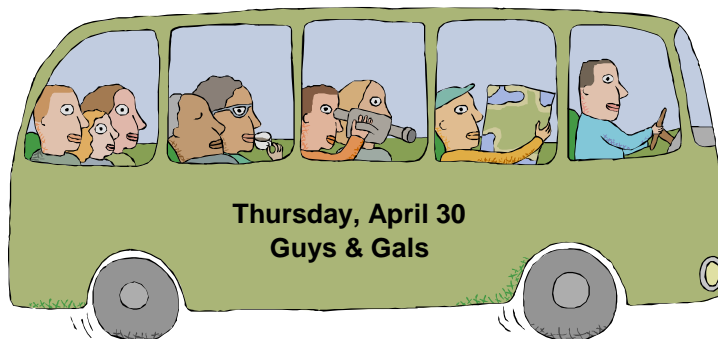
Buffet Supper at the Iron Skillet in Portage at 6:00 PM

Leave at 6:45 PM and return to St. John Lutheran Church-Kellner.

Sign up sheet for this tour is on the table in the narthex. **Please sign up by April 1.**

Cost \$45 per person, includes fare, meals (beverage & tip) and tours.

Please pay by April 15. Make check payable to St. John Ladies Aid and give to Mona Heindl.



Thank You

The Human Care Board would like to thank everyone who helped support our February Yonker Community Day Coupon Book Sale. We sold 40 books which generated \$200 cash. Also the bonus amount from our sale last fall was \$310. Both of these amounts will be used to help pay one of our primary loans. Thanks again to all.

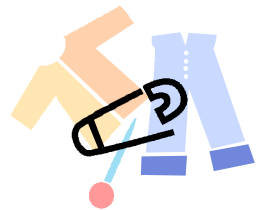
Beth-Birei Second Chance Home Collection

The Human Care Ministry Board is asking for your help with the annual collection of items needed by the Beth-Birei Second Chance maternity Home in Wisconsin Rapids. A designated box for donated items will be located in the narthex during the month of April. Items needed include:

- Disposable & cloth diapers
- Baby wipes
- Pacifiers
- Onesies & sleepers
- Baby lotion & shampoo
- Teething rings
- Crib sheets
- Infant bibs
- Infant toys

Also, cleaning supplies & paper products are always needed.

Your donations will be greatly appreciated.



2009 Palm Sunday Concert

The Palm Sunday Chorus will present its 56th annual concert of sacred choral music on Sunday, April 5 at 3 p.m. at Our Lady of Peace Church, Marshfield. This annual holiday program is a popular area tradition and an inspirational beginning to Holy Week. One hundred ten singers from throughout central Wisconsin have formed an interfaith volunteer chorus to sing an uplifting selection of sacred works, and spirituals. Dr. Robert L Morris, Minneapolis, will be our guest conductor. Area instrumentalists will join concert accompanists Kathy Biederwolf, Marshfield, and Maxine Johnson, Spencer to compliment the singing. The Palm Sunday Concert is free and you are cordially invited to attend.

Ladies Evening Guild Cookout

April 24, 2009
from 9 AM-2 PM
at Wal-mart

Thanks for your support!



Library Donations Accepted All Year

The library is now accepting book donations throughout the year. We will also take cds and videos in "good working order only" to sell at our sale. Please bring your items in a bag marked "Book Sale" and place them in the library area. Your donations are greatly appreciated.



Bethesda Thrift Shop

Spring is here and the Bethesda Thrift Shop is loaded with spring and summer clothing. Come and shop for some top quality clothing for your spring ensemble. The store also has ample amounts of Easter items, knick knacks, athletic items, and much more... and all for super low prices on everything. We also have begun a special day for Seniors (60+) - the first Wednesday of each month - 15% off everything. We are also in need of your donations of all kinds of items that are in good condition. We are also expanding our furniture department. We need some good quality furniture donations. Thank you for supporting and enhancing the lives of people with intellectual and developmental disabilities at Bethesda.



Youth Lock-In (6-8th grade)

Immanuel Lutheran Church (Wisconsin Rapids), along with St. Luke's, is hosting a lock-in on Friday April 17th at Immanuel Lutheran School for all Jr High (6-8th grade) students in the area. Students from Concordia University in Mequon, WI will be coming to help us lead this event. The festivities will begin at 7 pm on Friday evening, and continue until Saturday morning at 7 am. There will be ice-breakers and group builders, games, activities, pizza, and of course the opportunity to grow closer to fellow Christians and God! We'll even have our own worship service for YOU to help lead in the middle of the night! If you are interested, please contact the Immanuel Lutheran Church office at 423-3260 and leave your contact information for Tara McMiller or Melissa Peet. We will get more information to you as the date draws closer.

Aspirus Comfort Care & Hospice Volunteer Program

Are you interested in becoming an Aspirus Comfort Care and Hospice Volunteer?

When you become a volunteer with Aspirus Comfort Care and Hospice Services, you help make a difference in the quality of life for our patients. Aspirus Angels share a capacity for giving and a spirit for helping others. We are looking for bighearted individuals who are willing to go the extra mile for patients.

To become an Aspirus Angel, please call the Aspirus Comfort Care and Hospice Volunteer Coordinator, Tasha Stencil at: 715-847-2705 or toll free 1-866-331-2467 or for more information, please visit our website www.aspirus.org go to the right side of the screen under **Quick Links** and click on **Volunteers**. Then click on **Become a Volunteer** located at the top of the screen to fill out an application. Training is based on your schedule and needs.



Become an Aspirus Angel today...Give back to our community!

National Disaster Congregational Response Training Events Set

Several National Disaster Congregational Response Training Events will be held in the district in the next two months. One event has already taken place at Redeemer Lutheran in Marquette, MI. To register, call the District Office (800-333-2421 or 845-8241) or write: sandy@nwdlcms.org. You can also call the church. There is no cost for the training.

Events and locations are:

+ Peace Lutheran/Eau Claire/Thursday, March 26, 2009, 6-9:30 p.m. 715-834-2486.

+ Trinity Lutheran/Ironwood/Tuesday, April 14, 2009, 6-9:30 p.m. 906-932-3022

+ Immanuel Lutheran/WI Rapids/ Monday, April 20, 2009, 6-9:30 p.m. 715-423-3260

+ Pilgrim Lutheran/Green Bay/Saturday, April 25, 2009, 8:30 - noon. 920-965-2233

+ St. Mark Lutheran/Wausau/Tuesday, April 28, 2009, 6-9:30 p.m.

Faith-based organizations, like LCMS World Relief and Human Care, are being asked to subscribe to a uniform standard for disaster response volunteers by FEMA and the Department of Homeland Security prior to 2010. That uniform standard suggests basic disaster volunteer training for faith-based organizations that want to be recognized by FEMA and DHS. LCMS World Relief and Human Care, as the disaster response arm of the LCMS, wants to be a recognized faith-based organization. This is an attempt to “stem the tide of spontaneous volunteers and donations” that arrive on scene following a disaster. Spontaneous volunteers and donations create additional concerns for governmental and non-governmental agencies as well as faith-based organizations that routinely respond to disasters (housing, feeding, assignments, logistics, storage, and etc).

What FEMA, DHS, National Voluntary Organizations Active in Disasters (NVOAD) are asking is that volunteers being deployed by recognized faith-based organizations, like LCMS World Relief and Human Care, have basic disaster training prior to arriving on scene. In return, FEMA and DHS are willing to give recognized status to LCMS World Relief and Human Care and in turn, we can provide certification to disaster volunteers who have completed our Lutheran Early Response Team program(LERT). This LERT exceeds the suggested level of training. If the recommendations of FEMA and DHS (as found in the National Response Framework) are put into effect, spontaneous volunteers could be turned away from federally declared disaster effective 2010.

We will be doing the Congregational Training at this event. The LERT training will be available to those interested this fall.